

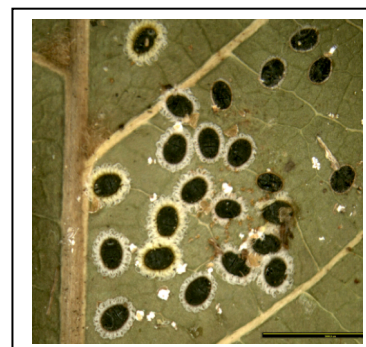
## National Plant Biosecurity Diagnostic Network



# Expression of Interest

## Whitefly Diagnostic Workshop

Sought for attendance at  
(Aleyrodidae: Hemiptera)  
Brisbane – Univ. Queensland  
19 – 23 June 2017



This workshop will give diagnosticians, researchers and plant biosecurity officers a practical understanding of the Australian Whitefly fauna and a knowledge of some of the major pest species exotic to Australia. The workshop will cover collection, preservation (slide making etc), morphology, both morphological and some aspects of molecular taxonomy of a range of commonly encountered endemic and exotic species. It is envisaged that about 40 or more taxa will be studied.

### Presenters

**Peter Gillespie** (NSW DPI) will be presenting the workshop and he has had twenty years' experience in the understanding of this group in Australia and in SE Asian. **Sally Cowan** (DAWR) has had broad experience with tropical whiteflies from northern Australia and SE Asia. A **guest speaker** will talk on the molecular ecology of some of the most economically important whiteflies, particularly *Bemisia tabaci* and kin.

**Location:** Univ. of Queensland Biosciences Lab.

### Provisional agenda

Monday 19<sup>th</sup> – Introduction to whiteflies, anatomy, ecology  
Tuesday 20<sup>th</sup> – collecting, preparing, mounting whiteflies, review Aleurodicinae (6)  
Wednesday 21<sup>st</sup> – Review Aleyrodinae taxa (15)  
Thursday 22<sup>nd</sup> – Review Aleyrodinae taxa (16)  
Friday 23<sup>rd</sup> – review Aleyrodinae taxa – *Bemisia* (3), Molecular ecology, Competency assessment

### Interested?

If you are interested in attending this workshop please send an expression of interest to the [spkhs@agriculture.gov.au](mailto:spkhs@agriculture.gov.au) mailbox by 5:00pm AEDT 19 May 2017. SPKHS will review the expressions of interest with the aim of achieving the most suitable representation across jurisdictions and organisations. Those participants from northern Australian jurisdictions (QDAF, DAFWA, NTDPI, NAQS) or those who can demonstrate that their role relates to diagnostics in northern Australia will be funded to attend under the Modern Diagnostics project. Attendees must be [NPBDN](#) members so if you are interested in attendance but are not a member join the network for free right now!

We will inform you of the outcomes of the expressions of interest process by 5:00pm AEDT 26 May 2017.

For further information regarding this workshop please contact any of the following:

### Contacts

Peter Gillespie: 02 63913985 mob: 00438827489 email: [peter.s.gillespie@dpi.nsw.gov.au](mailto:peter.s.gillespie@dpi.nsw.gov.au)  
Craig Marston: 07 4241 7942 mob: 0434 686 198 email: [craig.marston@agriculture.gov.au](mailto:craig.marston@agriculture.gov.au)